

DHome

Gallery Talk:

What's happening on the Dallas arts scene in spring 2010.

Published 3.10.2010

From [D Home MAR-APR 2010](#)

Spring is in full swing, new exhibitions are blooming in galleries all over town, and it seems that everyone is in the mood to party. Wish **Holly Johnson Gallery** a happy anniversary by checking out *Back and Forth: Celebrating Five Years*.

Commemorating five years in business, the exhibition features work by artists such as Virgil Grotfeldt, David Maisel, John Adelman, Dornith Doherty, and many more. (Mar 27-May 1) The folks at

Craighead Green Gallery are in

celebration mode as well. This year's

annual group show includes nearly 80 new works from Craighead Green artists and also honors the gallery's fifth year on Dragon Street. Expect a diverse mix of works of all mediums. (Mar 27-May 1) You know who else is ready to make merry? The **Dallas Art Dealers Association**, which is entering its 25th year. The annual Spring Gallery Walk features more than 35 of DADA's member galleries, museums, and nonprofit spaces, and a post-Gallery Walk party goes till 1 a.m. at 2616 Commerce St. (Apr 17, 2-8 pm) At [Marty Walker Gallery](#),

enjoy the oil paintings of Lisa Grossman. Her depictions of rural eastern Kansas are painted on location and explore "the emotional responses to atmospheric shifts in light, color, and the vast distance of land and sky." (Mar 23-Apr 17) Finally, we're happy to report there's a new gallery in town—for a while, anyway. Curated by James Cope of the Goss-Michael Foundation and Brian Gibb of the **Public Trust, POP UP 310** has set up shop in the former Gardens space in West Village. The temporary gallery, which focuses on smaller works by emerging and established artists, is "a work in progress, an ongoing project to be considered as an art installation itself."



Lisa Grossman:

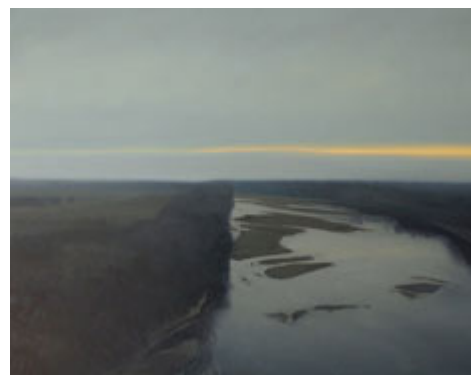
New Landscape Oil Paintings

[Marty Walker Gallery](#) 2135 Farrington St. Dallas, TX 75207

online

March 2010

Lisa Grossman is an oil painter who has chosen rural eastern Kansas as her subject. We are from Kansas, and it probably wouldn't be our top choice to paint, so we are intrigued to see how she pulls this off. Apparently, she paints on location and from aerial photographs, and she doesn't paint many trees, cars, houses, or anything like that. Just landscape and "transient clouds, winding waterways, glowing sun bursts, or glassy reflections," according to the press release. Perhaps we should rethink how we feel about our home state.



Lisa Grossman's Sand River I, 2010, oil on canvas