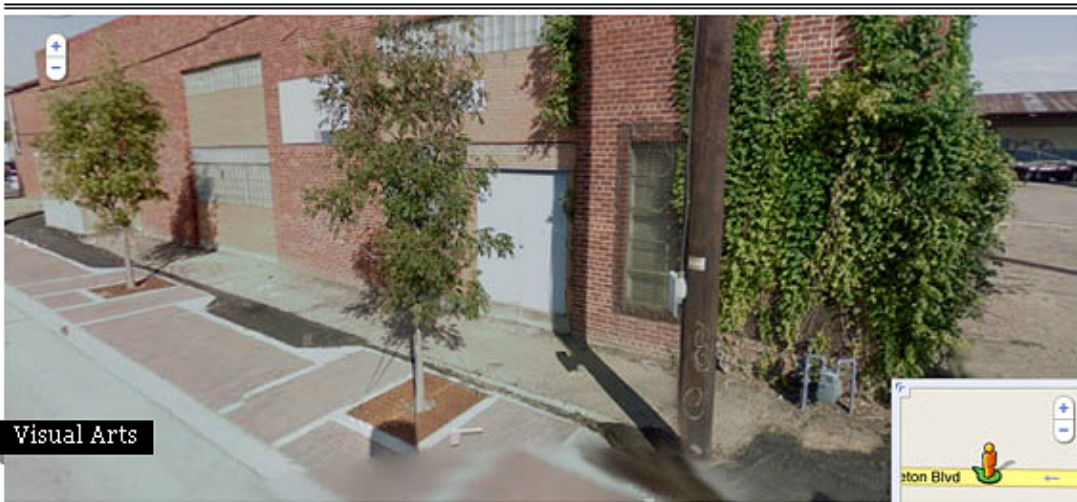




FrontRow

A DAILY REVIEW OF THE DALLAS ARTS



Will 'Sustenance' Be This Season's Most Important Art Event?

By [PETER SIMEK](#) August 12th, 2010 12:12pm

Forget that whining about arts funding, suddenly the Dallas visual art world seems zestier than ever. I'm still riding a little on [the post-Bank hype](#), but now a new show featuring a few "bank vets" is set to open on September 11 (intentional?), piggy-backing on a similar approach to thinking about how we should organize our local artists and exhibitions. [Sustenance](#), the brainchild of Anne Lawrence and Stephen Laphisophon, is a site-specific exhibition that brings together two-dozen artists to create work in a dilapidated West Dallas commercial property located at 337 Singleton Blvd. The list of artists is mixed, but there are enough heavy hitters to know the show will contain some quality. Bank vets **Frances Bagley**, **Tom Orr**, and **Jeff Zilm** will participate, as well as some other exciting additions, like Linnea Glatt and Jim Cinquemani, **Ludwig Schwartz**, and Sedrick Huckaby.

My only double take concerned curator Stephen Laphisophon's rather "far out dude" explanation of the show:

"Sustenance relates to the need to create—to fill up, to adorn or to embellish. We add to the world every day but sometimes there is just enough. We keep going in order to sustain ourselves—and our fellows. We keep 'keeping on' in order to continue. To breathe, feed, share and give permission for others to open the same door. Recognizing that the door has left the hinges we rush in to fill in the gaps, block out the echoes and fill in the shadows."

The full release is after the jump, and you can keep tabs on the show's progress [by following their blog](#).

Photo: 337 Singleton before it was painted blue (via Google Street View)

FOR IMMEDIATE RELEASE

SUSTENANCE, Site-Specific Art Exhibition

September 11-October 3, 2010

Dallas, TX, August 11, 2010 – Site-specific installations by 24 artists will occupy a vacant two-story building in West Dallas during the exhibition *Sustenance*, opening Saturday, September 11, 2010, 11 a.m.-10 p.m.

Exhibition curator Stephen Lapthisophon explains, “*Sustenance* relates to the need to create—to fill up, to adorn or to embellish. We add to the world every day but sometimes there is just enough. We keep going in order to sustain ourselves—and our fellows. We keep ‘keeping on’ in order to continue. To breathe, feed, share and give permission for others to open the same door. Recognizing that the door has left the hinges we rush in to fill in the gaps, block out the echoes and fill in the shadows.”

Two-dozen artists from Dallas, Arlington, Fort Worth, and Chicago will create site-specific responses to the idea of *sustenance* including sound installations, video, sculpture installations, and performances. Participating artists include: Kimberly Aubuchon, **Frances Bagley**, **Jesse Barnett**, Iris Bechtol, Shannon Brunskill with Courtney Brown, Brian Fridge, Justin Ginsberg, Linnea Glatt and Jim Cinquemani, Matt Hanner, Chris Hefner, Kate Helmes, Sedrick Huckaby, Devin King, Darryl Lauster, Lou Mallozzi, Kristin Mariani, Michael Mazurek, Patrick Murphy, **Tom Orr**, **Ludwig Schwarz**, Lizzy Wetzel, and **Jeff Zilm**.

The property, owned by West Dallas Investments, is located within sight of the Margaret Hunt Hill Bridge designed by Santiago Calatrava under construction over the Trinity River. The stripped building has been out of use for years and offers unique opportunities for exploring visual and conceptual ideas.

The exhibition will be open on Saturdays and Sundays between September 11 and October 3, 2010, 11 a.m.-10 a.m. on opening day and 11 a.m.-7 p.m. subsequent weekends. For more information about programming during the exhibition, images, updates from participating artists, and links to artist websites visit the exhibition blog at <http://sustenanceexhibition.blogspot.com>.

What: *Sustenance*

Who: Organized by Stephen Lapthisophon and Anne Lawrence

When: Opening day—Saturday, September 11, 11am-10pm

Open Saturdays and Sundays, September 11-October 3, 2010, 11am-7pm

Where: 337 Singleton Blvd., Dallas TX 75212

FREE: Open to the public